



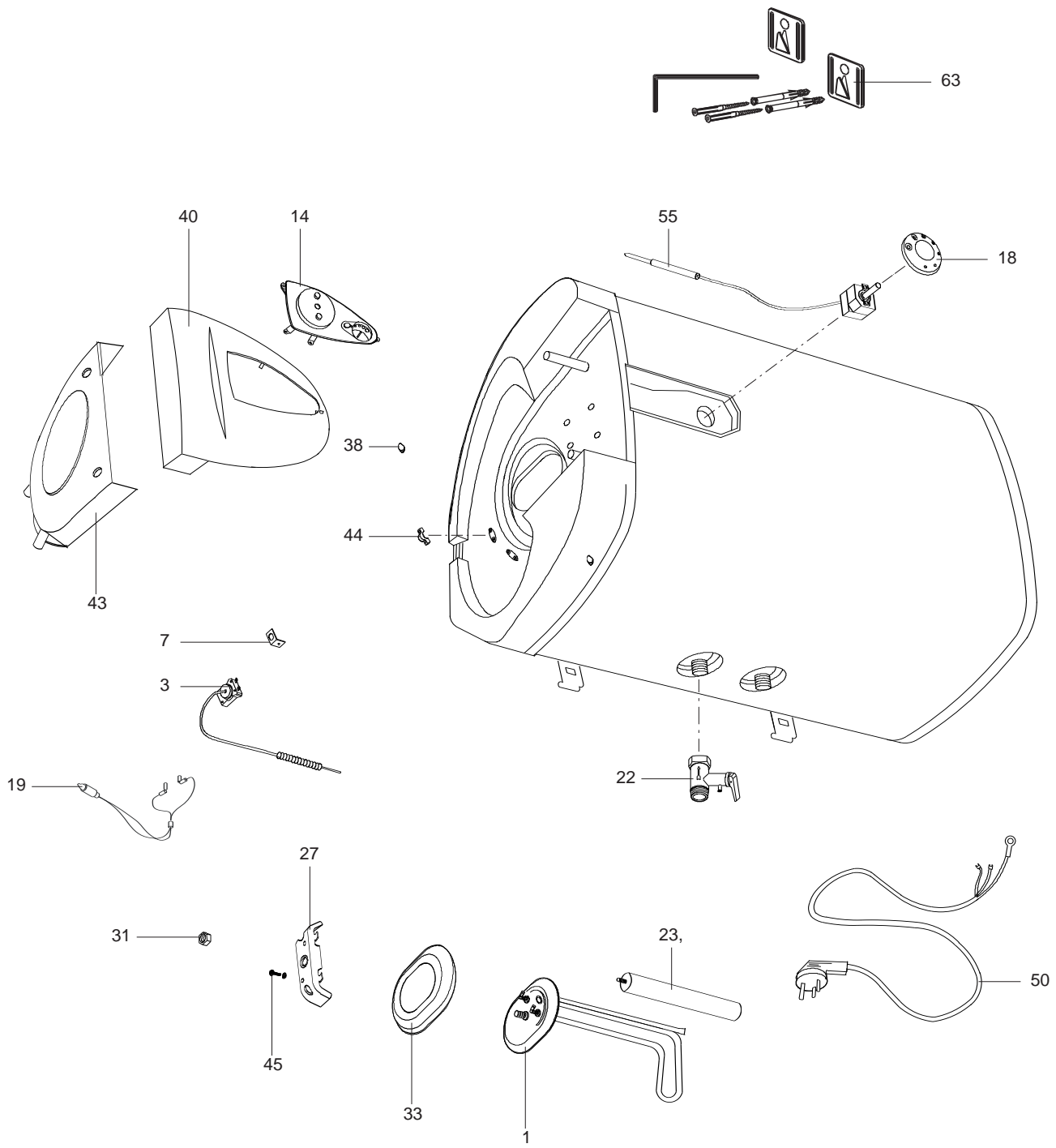
SPARE PARTS EXPLODED VIEW
STORAGE ELECTRIC WATER HEATERS
Model
TI-SHAPE H QB EE

R8215571-01EN - Edition 01 - 02/10/2006

TI-SHAPE H QB EE

Storage Electric Water Heaters

504 307		TI-SHAPE 50 H QB EE
504 277		TI-SHAPE 65 H QB EE
504 278		TI-SHAPE 80 H QB EE
504 279		TI-SHAPE 100 H QB EE
Reference	Ind.	Model type	Begin	End



Storage Electric Water Heaters

LIST OF THE ABBREVIATIONS

HW	: Hot water.
CW	: Cold water.
C	: Ceramic resistance (normal heating).
Ca	: Ceramic resistance (accelerated heating)
TP	: Immersion heater.
1F	: With fittings.
2F	: Without fittings.
3F	: With fittings and another outlet connection.
AMI	: With mixing valve.
SMI	: Without mixing valve.
PUISS	: Power of th appliance.
PN	: Appliance with normal pression.
LP	: Appliance with low pression.
PV	: Appliance with variable power.
PF	: Appliance with fixed power..

IDENTIFICATION PLATE

SERIAL NUMBER

Ex: 03 09 08

Manufacturing day
Month of manufacture : from 1 to 12 → January to December
Year of manufacture

OR

Ex: 02 11 00001 007843

Product reference
Sequential number
Month of manufacture : from 1 to 12 → January to December
Year of manufacture

The indications mentionned on the prices, commercial or technical literature and the scheme are written for your guidance and are available at a given time. The CONSTRUCTOR retains the power to modify the presentation, the form, the size, the conception or the material of the products.