



SPARE PARTS EXPLODED VIEW  
GAS WALL BOILERS

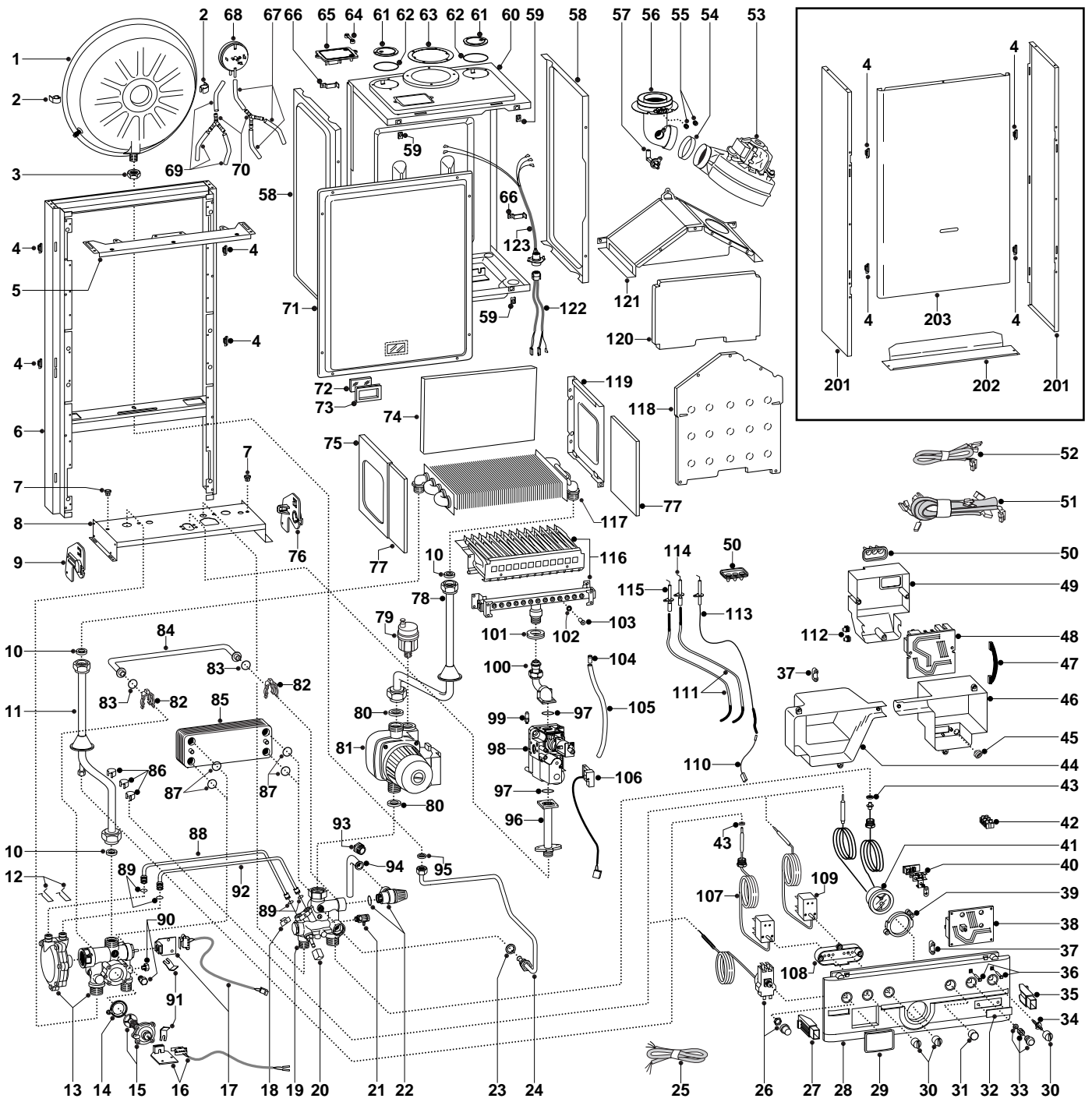
Models

**AT 23 MFFI**

---

Edition 2 of 15 September 2000





MODELS	CHARACTERISTICS	SERIAL NO: VALIDITY	REF.
AT 23 MFFI	METHANE	2320007700003	A
AT 23 MFFI	LPG	2320007700003	B

<b>PART.</b>	<b>CODE</b>	<b>DESCRIPTION</b>	<b>REF.</b>	<b>NOTE</b>
1	573294	Expansion vessel		
2	999679	Expansion vessel insert		
3	573244	3/8" lock nut		
4	574302	Casing support bracket (Plastic)		
5	572984	Casing support bracket		
6	-----	Frame		11
7	570772	Cable holder		
8	-----	Hydraulic group support		11
9	998042	Hydraulic support bracket (L/H)		
10	573520	Gasket 3/4"		
11	997744	Pipe (main exchanger - 3 way group)		
12	573809	Spring (water venturi)		
13	998069	3-way pressure gauge valve group		
14	571547	Diaphragm (main flow switch)		
15	997713	Main flow switch		
16	998060	Microswitch (C.H./D.H.W.)		
17	998100	Microswitch (complete)		
18	571838	Pipe fixing clip		
19	998071	Return group		
20	571559	Filling cock knob		
21	573727	Manual vent cock		
22	573172	Safety valve (1/2" 3 bar)		
23	573528	Gasket 1/2"		
24	573311	Pipe (expansion vessel)		
25	998012	Cable (power supply)		
26	571829	Thermostat (overheat)		
27	997753	Control panel bracket holder (L/H)		
28	997750	Control panel		
29	997745	Timer opening cover		
30	572963	Regulation knob		
31	997717	Plastic cover		
32	997824	Name badge (plastic)		
33	998062	Release push button kit		
34	998061	Rotative extension switch		
35	997752	Control panel bracket holder (R/H)		
36	997714	L.E.D. (power indicator)		
37	571562	Cable clamp		
38	953860	Printed circuit board (ET C-MI/FFI)		
39	572895	Temperature/pressure gauge fixing ring		
40	-----	Terminal board		11
41	571832	Pressure/temperature gauge		
42	573091	Terminal board (three pole)		
43	569390	Gasket 1/4"		
44	997746	Thermostat cover		
45	569458	Cable holders silicone D.2		
46	997747	Power cover		
47	997731	Cable (P.C.B.)		
48	953332	Printed circuit board (CBM AT-FFI2)		
49	997748	P.C.B. cover		
50	998147	Ignition electrode cable rubber		
51	998102	High voltage wiring		
52	998007	Control wiring		
53	998807	Fan		
54	573343	Gasket (fan inlet)		
55	573326	Flue intake plug		
56	573333	Flue (exhaust manifold / header)		
57	573314	Venturi (exhaust/manifold header)		
58	573247	Panel (sealed chamber - side)		
59	570717	Spring (fastening)		
60	-----	Sealed chamber		11
61	573330	Air return cover		
62	573865	Flue gasket		
63	573337	Gasket (flue manifold)		
64	573329	Pressure intake cover		
65	997203	Support plate (air pressure switch)		

ER200021B013902001

PART.	CODE	DESCRIPTION	REF.	NOTE
66	998108	Cable clamp		
67	569662	Silicone pipe		
68	571653	Air pressure switch		
69	571575	Silicone pipe (positive signal)		
70	573327	"Y" piece (air pressure)		
71	573344	Panel (front - sealed chamber)		
72	998075	View window glass		
73	998076	View window glass gasket		
74	998132	Back insulation panel		
75	573243	Combustion panel (L.H.)		
76	998041	R.H. hydraulic support bracket		
77	998128	Side insulation panel		
78	573313	Pipe (main exchanger - pump)		
79	564254	Auto air vent		
80	569387	Gasket 1"		
81	997000	Standard circulator with deaerator		
82	998064	Spring (by-pass pipe)		
83	998077	O-ring gasket		
84	998065	By-pass pipe		
85	571646	Secondary exchanger (p-type 23kW)		
86	571565	Fixing spring (pressure gauge)		
87	573825	O-Ring (secondary exchanger)		
88	573086	Pipe (main flow switch - positive signal)		
89	571807	O-Ring (20-18)		
90	570615	1/8" Brass plug		
91	573824	Bracket (M/Flow Micro Switch)		
92	573087	Pipe (main flow switch - negative signal)		
93	998567	Safety valve outlet pipe ring nut		
94	573176	Pipe (safety valve outlet)		
95	573521	Gasket 3/8"		
96	997202	Gas inlet pipe		
97	571965	O-Ring (13)		
98	571425	Gas valve		
99	573793	Intake (pressure - control valve)		
100	573289	Pipe (gas valve/burner)		
101	569443	Silicone seal		
102	572138	Burner jet washer		
103	570248	Burner jet (NG 1.25)	A	
103	570251	Burner jet (LPG 0.72)	B	
104	573325	Rivet		
105	573576	Compensation tube		
106	998052	Cable (gas valve operator)		
107	997723	Thermostat (D.H.W.)		
108	997751	Thermostat support		
109	571830	Thermostat (central heating)		
110	998058	Cable (detection electrode/P.C.B.)		
111	569503	Ignition electrode cable		
112	569720	Blind grommet		
113	573441	Electrode (Detection)		
114	569560	Electrode (Ignition R.H.)		
115	569561	Electrode (Ignition L.H.)		
116	572271	Burner 13 ramp (natural gas)	A	
116	572277	Burner 13 ramp (LPG)	B	
117	998138	Main exchanger		
118	997766	Panel (front)		
119	573242	Combustion panel (R.H.)		
120	998131	Front insulation panel		
121	997767	Flue hood (sealed chamber)		
122	998971	Cable (P.C.B./fan/air pressure switch)		
123	998970	Ventilator-pressure gauge cable		
201	998414	Case panel (side)		
202	998428	Case door insert		
203	997721	Case panel (front)		

ER200021B013902.001

<b>PART.</b>	<b>CODE</b>	<b>DESCRIPTION</b>	<b>REF.</b>	<b>NOTE</b>
361	569281	Burner jet 1.25mm full kit (NG)		12
362	569282	Burner jet 0.72 full kit (LPG)		12

<b>NOTE</b>	<b>DESCRIPTION</b>
11	Not supplied as a spare part
12	Not illustrated