



SPARE PARTS EXPLODED VIEW GAS WALL BOILERS

Models

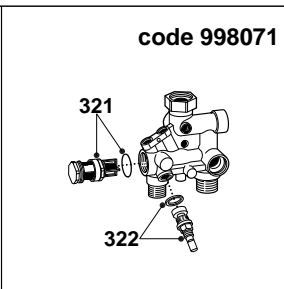
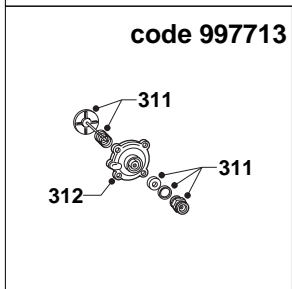
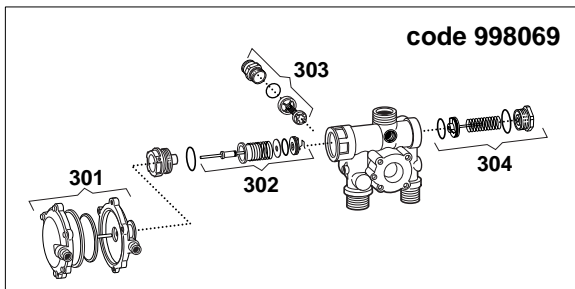
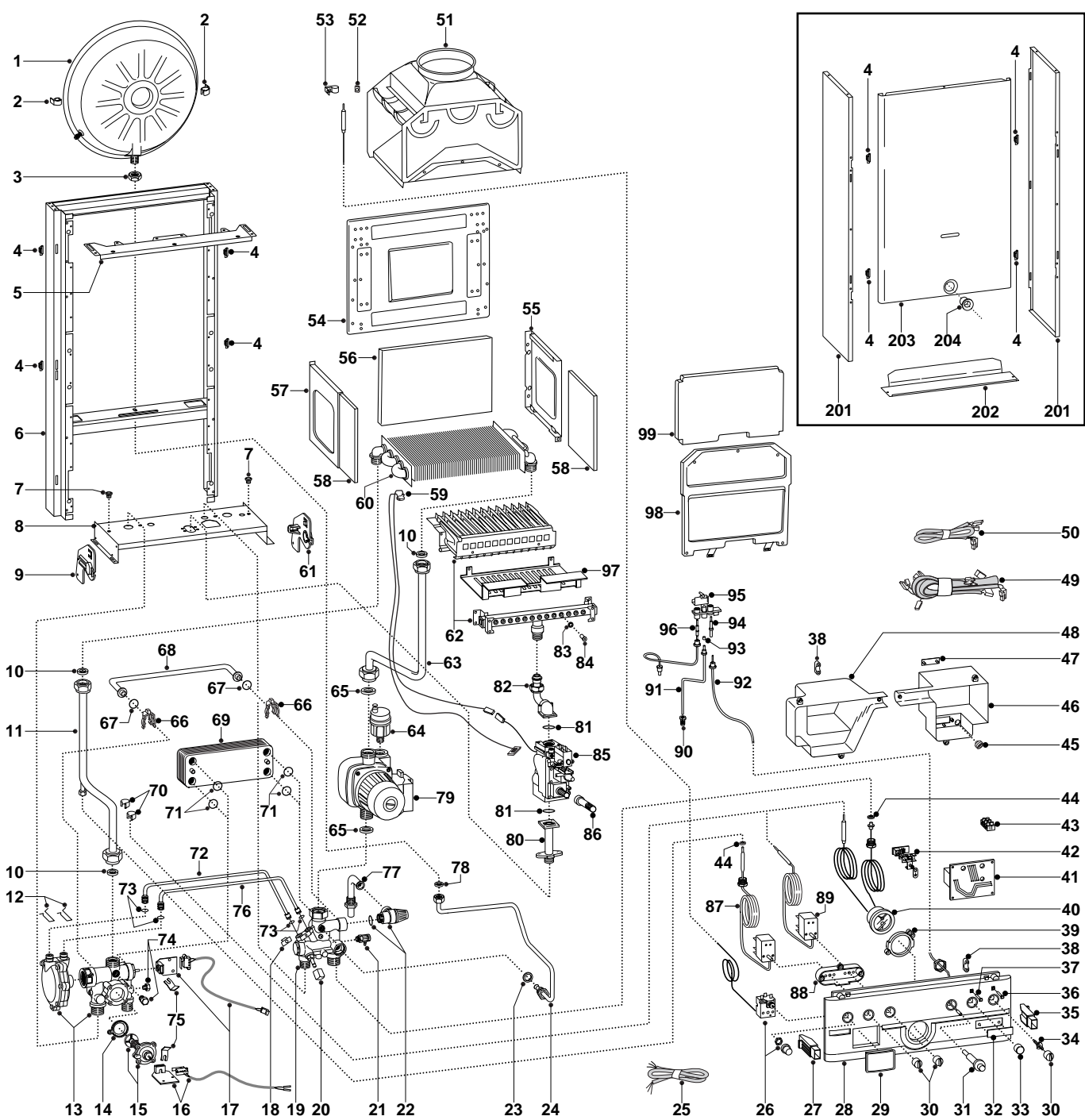
AT 23 M

AT 23 R

Edition 1 of 1 June 1999

Revision 1 of 29 August 2000





MODELS	CHARACTERISTICS	SERIAL NO: VALIDITY	REF.
AT 23 M	METHANE	9915300596	A
AT 23 M	LPG	9915300617	B
AT 23 R	METHANE	9915200211	C
AT 23 R	LPG	9915200235	D

ER200021A013701011

PART.	CODE	DESCRIPTION	REF.	NOTE
1	573294	Expansion vessel		
2	999679	Expansion vessel insert		21
3	573244	3/8" lock nut		
4	574302	Casing support bracket		
5	572984	Casing support bracket		
6	-----	Boiler frame		11
7	570772	Cable holder		
8	-----	Hydraulic group support		11
9	998042	L.H. hydraulic support bracket		
10	573520	Gasket 3/4"		
11	572961	Main exchanger/3-way-group pipe	AB	
11	997201	Main exchanger/3-way-group pipe	CD	
12	573809	Water Venturi pipe spring	AB	
13	573293	Heating delivery group	CD	
13	998069	3-way pressure gauge valve group	AB	
14	571547	Main flow switch membrane		
15	997713	Main flow switch		
16	998060	Micro for circulator pressure switch		
17	998100	Complete microswitch	AB	
18	571838	Pipe fixing square	AB	
19	573318	Return group	CD	
19	998071	Return group	AB	
20	571559	Filling cock knob		
21	573727	Manual vent cock		
22	573172	3 bar 1/2" safety valve		
23	573528	Gasket 1/2"		
24	573311	Expansion vessel pipe		
25	998012	Main power supply cord		
26	571543	78° fume thermostat		
27	997753	LH holder control panel bracket		
28	997749	Control panel	AB	
28	997827	Control panel	CD	
29	997745	Timer opening cover		
30	572963	Regulation knob		
31	997712	Piezoelectric ignitier		
32	998438	Brand holder		
33	997716	Front panel cover		
34	998061	Rotative extension switch	AB	
35	997752	RH holder control panel bracket		
36	997714	Power indicator L.E.D.		
37	997715	L.E.D. cover		
38	571562	Cable clamp		
39	572895	Temperature/pressure gauge fixing ring		
40	571832	Temperature/pressure gauge		
41	953850	P.C.B. ET C-M		
42	-----	Terminal board		11
43	573091	Three pole terminal board		
44	569390	Gasket 1/4"		
45	569458	Cable holders silicone D.2		
46	997747	Power cover		
47	997743	Plastic cover		
48	997746	Thermostat cover		
49	998105	High voltage wiring		
50	998091	Control wiring	CD	
50	997726	Low voltage wiring	AB	22
51	573983	Flue hood		
52	570717	Fastening spring		
53	571542	Flue control probe fixing spring		
54	-----	Combustion chamber back support		11
55	573242	R.H. combustion chamber panel		
56	998132	Back insulation panel		
57	573243	L.H. combustion chamber panel		
58	998128	Side insulation panel		
59	571159	Ecosplit cable + SIT gas valve thermostat		
60	998138	Main exchanger		23

ER200021A013701011

PART.	CODE	DESCRIPTION	REF.	NOTE
61	998041	R.H. hydraulic support bracket		
62	572271	Main burner	AC	
62	572277	Main burner	BD	
63	572908	Main exchanger/circulator pipe		
64	564254	Automatic air release valve		
65	569387	Gasket 1"		
66	573808	By-pass pipe spring	CD	
66	998064	Commutator shaft	AB	
67	571449	O-ring	CD	
67	998077	O-ring gasket	AB	
68	573219	By-pass pipe	CD	
68	998065	By-pass pipe	AB	
69	571646	Plate-type exchanger	AB	
70	571565	Pressure gauge fixing spring		
71	573825	D.H.W. exchanger O-ring	AB	
72	573086	Pressure gauge valve positive signal pipe	AB	
73	571807	20-18 O-ring	AB	
74	570615	1/8" brass cap		
75	573824	Microswitch fixing spring		
76	573087	Pressure gauge valve negative signal pipe	AB	
77	573176	Safety valve exhaust pipe		
78	573521	3/8" gasket		
79	997008	Standard circulator with deaerator		
80	573364	Gas inlet pipe		
81	565048	O-ring gasket for gas valve		
82	573387	Gas valve/burner pipe		
83	572138	Burner jet washer		
84	570248	Burner jet 1.25mm	A	
84	570251	Burner jet 0.72mm	B	
85	571095	Gas valve SIT		
86	998063	Gas valve push botton		
87	997723	D.H.W. thermostat	AB	
88	997751	Thermostat support		
89	571830	Two-stage thermostat for heating installation		
90	569543	SIT valve gas/pilot connection		
91	573365	Pilot burner pipe		
92	997730	Piezo ignition cable		
93	573652	0.27 pilot burner nozzle	AC	
93	573654	0.22 pilot burner nozzle	BD	
94	570475	Ignition electrode		
95	570514	Pilot burner		
96	564961	Thermocouple		
97	999411	Protection screen		24
98	572647	Front combustion chamber panel		
99	998131	Front insulation panel		
201	997267	Case panel (side)		
202	998428	Case door insert		
203	998754	Case panel (front)		25
204	-----	Grill for gas valve push-button		26
301	571446	Sanitary unit kit	AB	
302	571447	Way and unit kit	AB	
303	998490	Central heating by-pass kit	AB	
304	571442	Sanitary pressure switch kit	AB	
311	571441	Heating pressure switch kit		
312	574248	Pressure cover		
321	571444	Sanitary actuator kit	AB	
322	571445	Filling tap kit	AB	
361	569281	Burner jet 1.25 full kit (Natural gas)		12
362	569282	Burner jet 0.72 full kit (LPG)		12

ER200021A013701011

NOTE	DESCRIPTION
11	Not foreseen as a spare spart
12	Not illustrated
21	Replaces code 573310 - from serial number: 2320019200001 - production improvement
22	Replaces code 998398 - from serial number: 2320002000001 - production improvement
23	Replaces code 572749 - from serial number: 2320017300001 - production improvement
24	Replaces code 572842 - from serial number: 2320004000001 - production improvement
25	Replaces code 997722 - from serial number: 2320001200001 - production improvement
26	The code 997718 is not more in use with the new frontal model - from serial number: 2320001200001