

SPARE PARTS EXPLODED VIEW  
GAS WALL BOILERS

Models

**CODEX 23 MFFI**

**CODEX 27 MFFI**

**CODEX 23 RFFI**

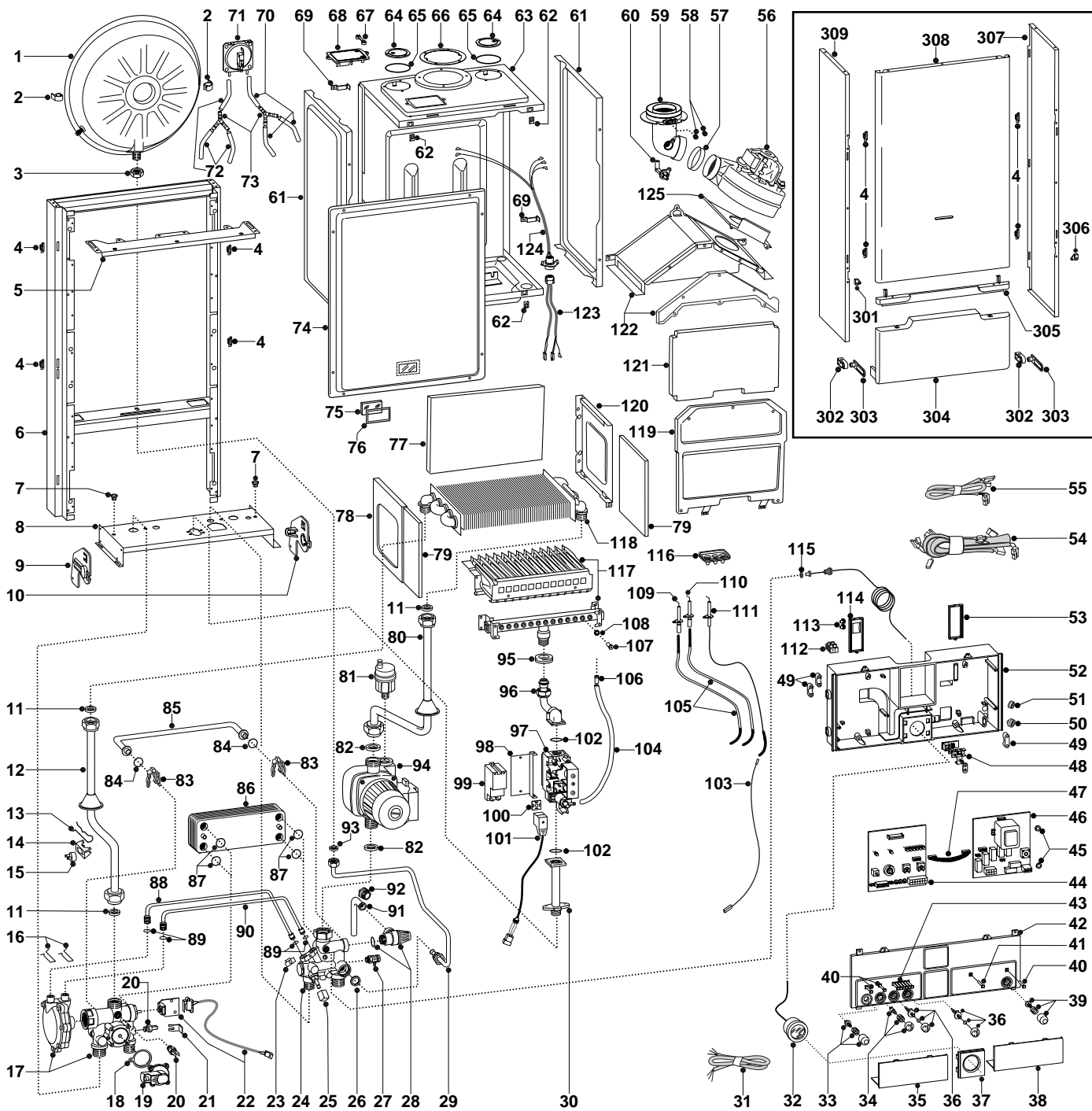
**CODEX 27 RFFI**

---

Edition 2 of 15 December 1999

Revision 1 of 25 August 2000





MODELS	CHARACTERISTICS	SERIAL NO: VALIDITY	REF.
CODEX 23 MFFI	METHANE	9931600001	A
CODEX 23 MFFI	LPG	9932100476	B
CODEX 27 MFFI	METHANE	9928501029	C
CODEX 27 MFFI	LPG	9930700398	D
CODEX 23 RFFI	METHANE	9931900440	E
CODEX 23 RFFI	LPG	9935500470	F
CODEX 27 RFFI	METHANE	9931900460	G
CODEX 27 RFFI	LPG	9935500210	H

ER2000210010702011

PART.	CODE	DESCRIPTION	REF.	NOTE
1	573294	Expansion vessel		
2	999679	Expansion vessel insert		21
3	573244	3/8" lock nut		
4	574302	Casing support bracket (Plastic)		
5	572984	Casing support bracket		
6	-----	Boiler frame		11
7	570772	Cable holder		
8	-----	Hydraulic group support		11
9	998042	Hydraulic support bracket (L/H)		
10	998041	R.H. hydraulic support bracket		
11	573520	Gasket 3/4"		
12	997199	Pipe (main exchanger - 3 way group)	ABEF	
12	997200	Pipe (main exchanger - 3 way group)	CDGH	
13	998043	Fixing spring (Thermostat)		
14	997224	Fixing spring (overheat thermostat)		
15	997206	Thermostat (overheat)		
16	573809	Spring (water venturi)	ABCD	
17	573293	3-way-pressure gauge valve group	EFGH	
17	998069	3-way pressure gauge valve group	ABCD	
18	571547	Diaphragm (main flow switch)		
19	998099	Main circuit flow switch		
20	569236	Temperature probe (C.H.W.)		
21	573824	Bracket (M/Flow Micro Switch)		
22	998921	Microswitch	ABCD	
23	571838	Pipe fixing clip	ABCD	
24	573318	Return group	EFGH	
24	998071	Return group	ABCD	
25	571559	Filling cock knob		
26	573528	Gasket 1/2"		
27	573727	Manual vent cock		
28	573172	Safety valve (1/2" 3 bar)		
29	573311	Pipe (expansion vessel)		
30	997202	Gas inlet pipe		
31	998012	Cable (power supply)		
32	571649	Pressure gauge		
33	573296	Release push-button Kit		
34	573298	Summer/Winter selector Kit		
35	571629	L.H. inspection cover		
36	573297	Front panel cover		
36	573328	Front panel cover	EFGH	
37	572948	Cover (Pressure Guage)		
38	571628	Inspection Cover (R.H).		
39	573299	On-Off push-button Kit		
40	571550	Power Indicator L.E.D. lens		
41	572659	Flue L.E.D. cover (white)		
42	999416	Control panel cover	EFGH	22
42	999505	Control panel cover	ABCD	23
43	571551	Temperature L.E.D. lens bank		
44	953070	E C-MI/FFI ASIC P.C.B.	ABCD	24
44	953770	Printed circuit board (EX C MI/FFI)	EFGH	25
45	569711	Nylon bush (10mm)		
46	952975	Printed circuit board (EI A-FFI/P)		26
47	952610	Cable (P.C.B.)		
48	-----	Terminal board		11
49	571562	Cable clamp		
50	569458	Cable holders silicone D.2		
51	573534	Cable holder D.75		
52	-----	Control panel		11
53	569713	Cable holder cover (R.H.)		
54	997724	High voltage wiring	ABCD	
54	997819	High voltage wiring	EFGH	
55	998047	Low voltage wiring	EFGH	
55	998055	Low voltage wiring	ABCD	
56	572990	Fan	CDGH	
56	998807	Fan	ABEF	

ER2000210010702011

PART.	CODE	DESCRIPTION	REF.	NOTE
57	573343	Gasket (fan inlet)		
58	573326	Flue intake plug		
59	573333	Flue (exhaust manifold / header)		
60	573314	Venturi (exhaust/manifold header)		
61	573247	Panel (sealed chamber - side)		
62	570717	Spring (fastening)		
63	-----	Sealed chamber		11
64	573330	Air return cover		
65	573865	Flue gasket		
66	573337	Gasket (flue manifold)		
67	573329	Pressure intake cover		
68	997203	Support plate (air pressure switch)		
69	998108	Cable clamp		
70	571575	Silicone pipe (positive signal)		
71	571651	Air pressure switch		
72	569662	Silicone pipe		
73	573327	"Y" piece (air pressure)		
74	573344	Panel (front - sealed chamber)		
75	998075	View window glass		
76	998076	View window glass gasket		
77	998130	Back insulation panel	CDGH	
77	998132	Back insulation panel	ABEF	
78	573243	Combustion panel (L.H.)		
79	998128	Side insulation panel		
80	572906	Pipe (main exchanger - pump)	CDGH	
80	573313	Pipe (main exchanger - pump)	ABEF	
81	564254	Auto air vent		
82	569387	Gasket 1"		
83	573808	Spring (by-pass pipe)	EFGH	
83	998064	Spring (by-pass pipe)	ABCD	
84	571449	O-ring	EFGH	
84	998077	O-ring gasket	ABCD	
85	573219	By-pass pipe	EFGH	
85	998065	By-pass pipe	ABCD	
86	571646	Secondary exchanger (p-type 23kW)	AB	
86	573295	Secondary exchanger (p-type 27kW)	CD	
87	573825	O-Ring (secondary exchanger)	ABCD	
88	573086	Pipe (main flow switch - positive signal)	ABCD	
89	571807	O-Ring (20-18)	ABCD	
90	573087	Pipe (main flow switch - negative signal)	ABCD	
91	573176	Pipe (safety valve outlet)		
92	998567	Safety valve outlet pipe ring nut		
93	573521	Gasket 3/8"		
94	997000	Standard circulator with deaerator	ABEF	
94	997004	Oversize circulator with deaerator	CDGH	
95	569443	Silicone seal		
96	573289	Pipe (gas valve/burner)		
97	570732	Gas valve (sit tandem)	ABCD	
97	571158	Gas valve (VK - without pilot burner outlet)	EFGH	13
98	573285	Spark Generator Support	ABCD	
98	998436	Igniter support	EFGH	
99	573023	Spark generator		
100	573022	Clamp	ABCD	
101	997661	Gas valve cable	EFGH	
101	999247	Gas valve cable	ABCD	27
102	571965	O-Ring (13)		
103	571657	Cable (detection electrode/P.C.B.)		
104	573576	Compensation tube		
105	571662	Cable (ignition electrode)		
106	573325	Rivet		
107	570248	Burner jet (NG 1.25)	ACEG	
107	570251	Burner jet (LPG 0.72)	BDFH	
108	572138	Burner jet washer		
109	569561	Electrode (Ignition L.H.)		
110	569560	Electrode (Ignition R.H.)		

PART.	CODE	DESCRIPTION	REF.	NOTE
111	573441	Electrode (Detection)		
112	571787	Terminal board (two pole)		
113	569720	Blind grommet		
114	569714	Cable holder cover (L.H.)		
115	569390	Gasket 1/4"		
116	998147	Ignition electrode cable rubber		
117	572271	Burner 13 ramp (natural gas)	AE	
117	572277	Burner 13 ramp (LPG)	BF	
117	572343	Burner 15 ramp (natural gas)	CG	
117	572372	Burner 15 ramp (LPG)	DH	
118	998138	Main exchanger	ABEF	28
118	998139	Main exchanger	CDGH	29
119	572648	Combustion chamber panel (front)	CDGH	
119	997766	Panel (front)	ABEF	
120	573242	Combustion panel (R.H.)		
121	998129	Front insulation panel	CDGH	
121	998131	Front insulation panel	ABEF	
122	997767	Flue hood (sealed chamber)	ABEF	
122	998103	Flue hood	CDGH	
123	999119	Cable (P.C.B./Electroventilator/pressure gauge)		30
124	998106	Ventilator-pressure gauge cable		
125	573465	Fixing plate (fan)	CDGH	
301	998441	LH shell bottom half-guide		
302	573360	Hinge		
303	998009	Hinge arm		
304	573361	Casing door		
305	573183	Insert		
306	998440	RH shell bottom half-guide		
307	997771	Case panel (R.H. side)		
308	997768	Panel (front case)		
309	997772	Case panel (L.H. side)		
311	573793	Intake (pressure - control valve)	EFGH	
321	569281	Burner jet 1.25mm full kit (NG)		12
322	569282	Burner jet 0.72 full kit (LPG)		12

NOTE	DESCRIPTION
11	Not supplied as a spare part
12	Not illustrated
13	Order also Part. 311 (Code 573793)
21	Replaces code 573310 - from serial number: 2320019200001 - production improvement
22	Replaces code 998858 - from serial number: 2320010800001 - production improvement
23	Replaces code 998818 - from serial number: 2320013200001 - production improvement
24	Replaces code 953033 - from serial number: 2320008800001 - production improvement - Not interchangeable
25	Replaces code 953033 - from serial number: 2320008800001 - production improvement - Not interchangeable
26	Replaces code 952981 - from serial number: 2320008800001 - production improvement - Not interchangeable
27	Replaces code 997657 - from serial number: 2320005200001 - production improvement
28	Replaces code 572749 - from serial number: 2320017300001 - production improvement
29	Replaces code 572835 - from serial number: 2320017300001 - production improvement
30	Replaces code 998107 - from serial number: 2320003100001 - production improvement