



SPARE PARTS EXPLODED VIEW
GAS WALL BOILER

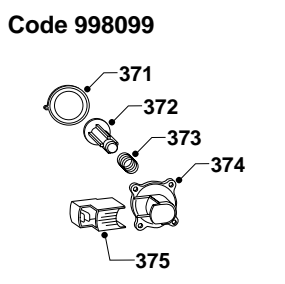
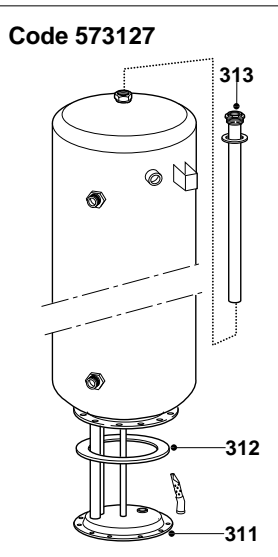
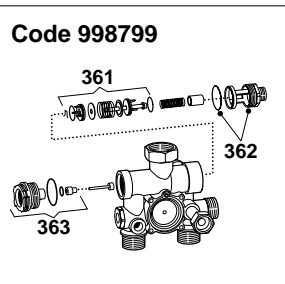
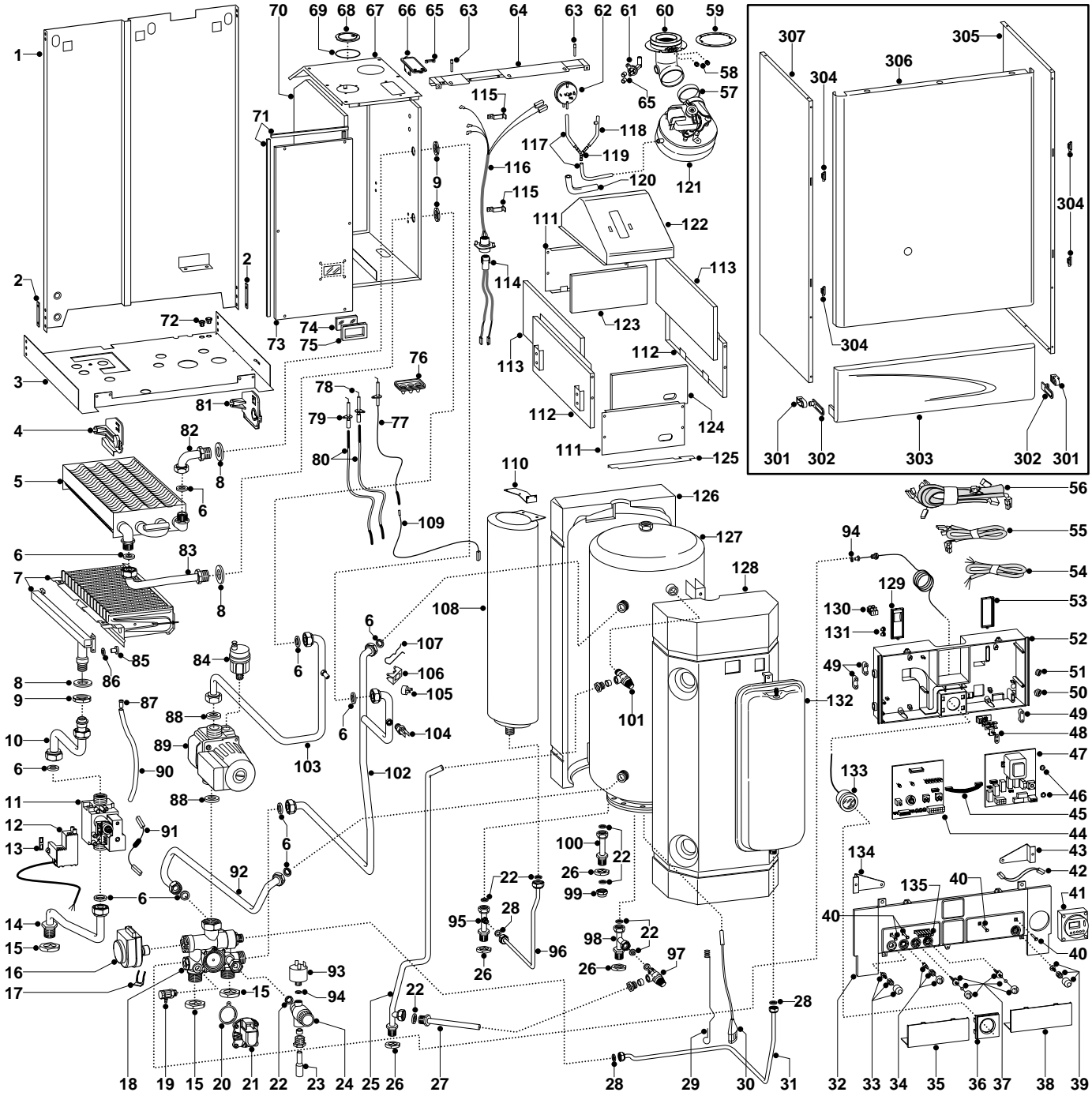
Model

GENUS 27 BFFI PLUS

Edition 1

Current from Serial No:- 2320010200001 to 2320020100002





MODELS	CHARACTERISTICS	SERIAL NO: VALIDITY	REF.
GENUS 27 BFFI PLUS	METHANE	2320010200001	A
GENUS 27 BFFI PLUS	LPG	2320010200001	B

ER20002 10020001001

PART.	CODE	DESCRIPTION	REF.	NOTE
1	-----	Frame		11
2	-----	Frame spacer		11
3	-----	Hydraulic group support		11
4	999164	Control panel bracket holder (L.H.)		
5	573435	Main exchanger		
6	573520	Gasket 3/4"		
7	572625	Burner 15 ramp (natural gas)	A	
7	572626	Burner 15 ramp (LPG)	B	
8	569413	Gasket 37x26x2		
9	569446	Lock Nut (Brass) 3/4"		
10	998701	Pipe (gas valve/burner)		
11	997089	Gas valve (SIT 845 SIGMA)		
12	574233	Spark generator		
13	574279	Gasket		
14	998890	Pipe (gas inlet)		
15	573523	Lock nut 3/4"		
16	997147	Motor (3-Way valve)		
17	997077	Fixing clip (motor)		
18	998799	Hydraulic group		
19	573727	Manual vent cock		
20	571547	Diaphragm (main flow switch)		
21	998099	Main circuit flow switch		
22	573528	Gasket 1/2"		
23	573190	Drainage pipe		
24	569292	Safety valve (3 bar)		
25	999430	Pipe (cylinder discharge)		
26	573530	Lock nut 1/2"		
27	999433	Pipe (safety valve outlet)		
28	573521	Gasket 3/8"		
29	570542	Spring (D.H.W. probe)		
30	573015	Temperature probe (D.H.W.)		
31	998922	Pipe (cold water inlet)		
32	999472	Control panel (front)		
33	571982	Reset Button		
34	571983	Summer/winter selector kit		
35	571627	Inspection cover (L.H.)		
36	571622	Pressure gauge cover		
37	571984	Control knob kit		
38	571623	Inspection Cover (R.H.)		
39	998015	Push button kit		
40	571550	Power Indicator L.E.D. lens		
41	569538	Time clock (digital)		
42	573101	Cable (time clock)		
43	999202	Control panel holder (R.H.)		
44	953082	Printed circuit board (low voltage)		
45	952610	Cable (P.C.B.)		
46	569711	Nylon bush (10mm)		
47	952935	Printed circuit board (high voltage)		
48	-----	Terminal board		11
49	571562	Cable clamp		
50	569458	Cable holders silicone D.2		
51	573534	Cable holder D.75		
52	-----	Control panel		11
53	571967	Cable cover (R.H.)		
54	998012	Cable (power supply)		
55	999427	Low voltage wiring		
56	999300	High voltage wiring		
57	573343	Gasket (fan inlet)		
58	573326	Flue intake plug		
59	573337	Gasket (flue manifold)		
60	998120	Flue exhaust manifold		
61	573314	Venturi (exhaust/manifold header)		
62	998484	Air pressure switch		
63	998426	Pivot		
64	999176	Casing support bracket		

PART.	CODE	DESCRIPTION	REF.	NOTE
65	573329	Pressure intake cover		
66	997203	Support plate (Air pressure switch)		
67	999065	Cover (sealed chamber)		
68	573330	Air return cover		
69	573865	Flue gasket		
70	-----	Sealed chamber		11
71	998516	Gasket (adhesive 10x6)		
72	570772	Cable holder		
73	998392	Panel (front - sealed chamber)		
74	998075	Sight glass		
75	998076	Gasket (sight glass)		
76	998147	Ignition electrode cable rubber		
77	573441	Electrode (Detection)		
78	569560	Electrode (Ignition R.H.)		
79	569561	Electrode (Ignition L.H.)		
80	998724	Ignition electrode cable		
81	999163	Control panel bracket holder (R.H.)		
82	570584	Pipe (return - main exchanger)		
83	570585	Pipe (flow - main exchanger)		
84	564254	Auto air vent		
85	570248	Burner jet (NG 1.25)	A	
85	570251	Burner jet (LPG 0.72)	B	
86	572138	Burner jet washer		
87	573325	Rivet		
88	569387	Gasket 1"		
89	999434	Pump		
90	573576	Compensation tube		
91	998008	Cable (resistive)		
92	998526	Pipe (return - cylinder)		
93	998627	Low pressure switch		
94	569390	Gasket 1/4"		
95	999412	Pipe (D.H.W. cylinder - outlet)		
96	999413	Pipe (D.H.W. vessel - outlet)		
97	573139	Expansion relief valve 6 bar		
98	999432	Pipe (cold water inlet)		
99	570571	1/2" brass cap		
100	999429	Pipe (secondary return)		
101	573140	Temperature/pressure relief valve (7 bar)		
102	998910	Pipe (flow - cylinder)		
103	999431	Pipe (pump/main heat exchanger)		
104	998458	Temperature probe		
105	997206	Thermostat (overheat)		
106	997224	Mounting bracket (overheat thermostat)		
107	998043	Fixing spring (overheat thermostat)		
108	999403	Expansion vessel (D.H.W.)		
109	571657	Cable (detection electrode/P.C.B.)		
110	999419	Support bracket (D.H.W. vessel)		
111	570553	Panel (combustion chamber - front)		
112	999161	Panel (combustion chamber - side)		
113	998136	Panel (insulation - side)		
114	999178	Cable (fan/P.C.B.)		
115	998108	Cable clamp		
116	998725	Cable (fan/air pressure switch)		
117	569662	Silicone pipe		
118	571819	Silicone pipe (negative signal)		
119	573327	"Y" piece (air pressure)		
120	-----	Pipe-joint		11
121	998806	Fan		
122	998891	Flue hood		
123	998148	Back insulation panel		
124	998133	Front insulation panel		
125	573113	Air diffuser		
126	570534	Cylinder polyurethane shell (rear)		
127	573127	D.H.W. cylinder 60 l		
128	570535	Cylinder polyurethane shell (front)		

PART.	CODE	DESCRIPTION	REF.	NOTE
129	571968	Cable cover (L.H.)		
130	571787	Terminal board (two pole)		
131	569720	Blind grommet		
132	573456	Expansion vessel (C.H.)		
133	571649	Pressure gauge		
134	999203	Control panel holder (L.H.)		
135	571551	Temperature L.E.D. lens bank		
301	573360	Hinge		
302	998009	Hinge arm		
303	999172	Case door (control panel)		
304	574302	Casing support bracket (Plastic)		
305	999169	Case panel (R.H. side)		
306	999114	Panel (front case)		
307	999170	Case panel (L.H. side)		
311	570441	Cylinder flange		
312	570440	Cylinder flange (stainless steel)		
313	570439	Anode (cylinder)		
361	998972	3 Way spring kit		
362	998973	Acuator bush		
363	998013	Heating actuator bush		
371	571547	Diaphragm (main flow switch)		
372	571772	Magnet (main flow switch)		
373	571771	Spring (main flow switch)		
374	571770	Top cap (main flow switch)		
375	998172	Microswitch (main flow switch)		
381	569281	Burner jet 1.25mm full kit (NG)		12
382	569282	Burner jet 0.72 full kit (LPG)		12

NOTE	DESCRIPTION
11	Not supplied as a spare part
12	Not illustrated