



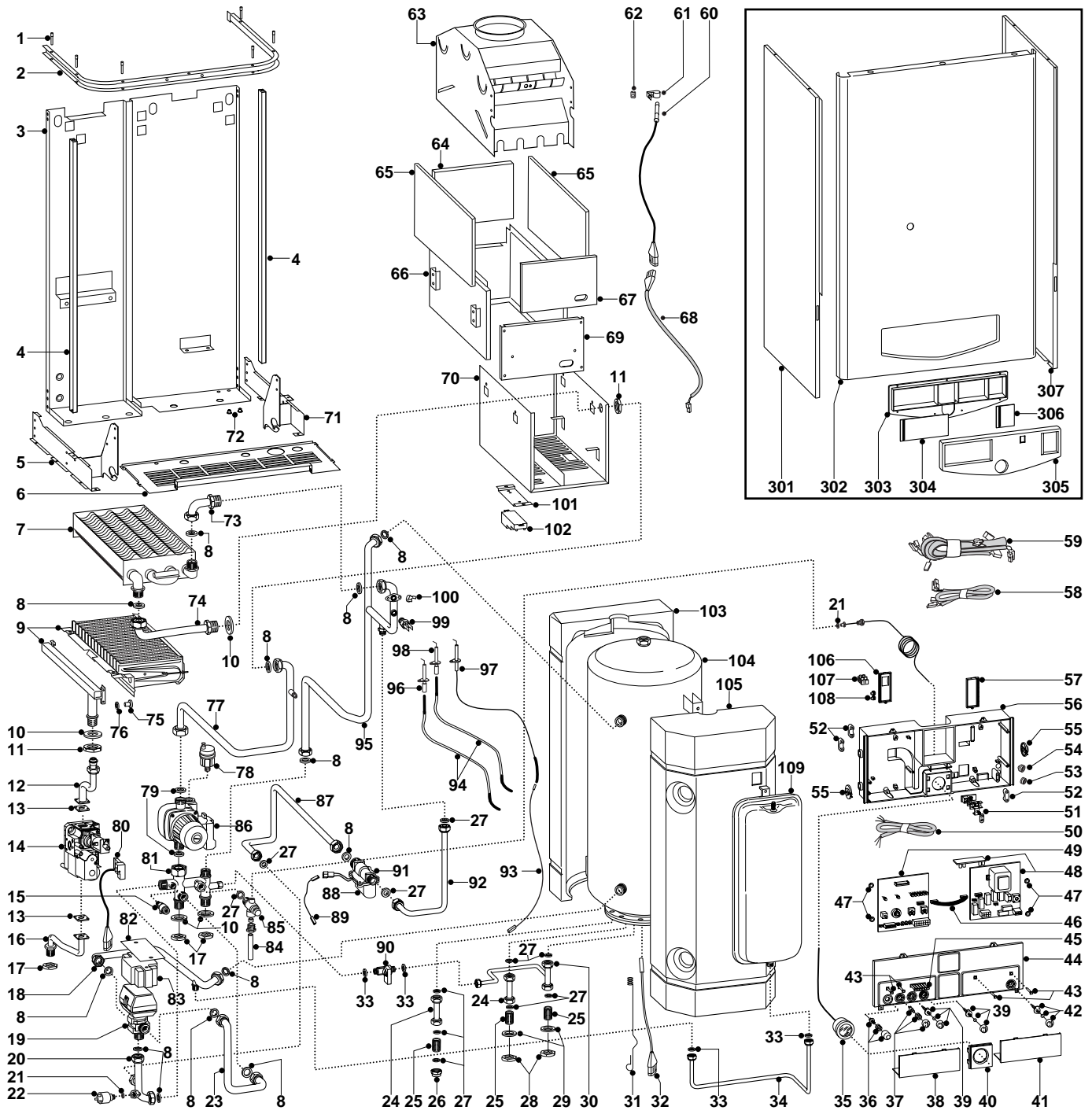
SPARE PARTS EXPLODED VIEW
GAS WALL BOILERS

Models

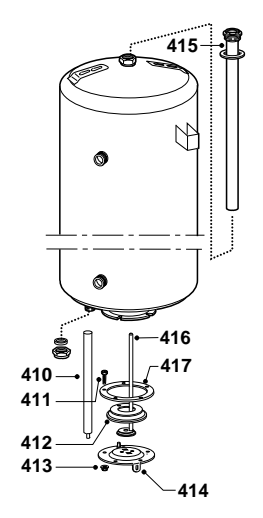
GENUS 27 BI

Edition 1 of 1 February 1998

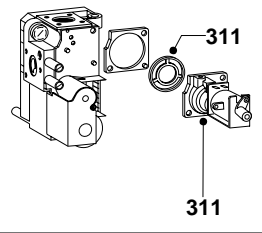




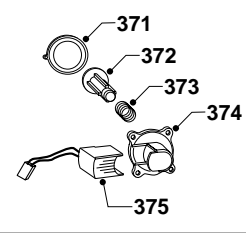
cod. 467290



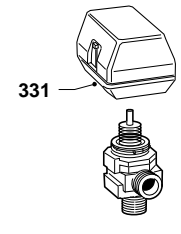
cod. 571158



cod. 573224



cod. 573455



MODELS	CHARACTERISTICS	SERIAL NO: VALIDITY	REF.
GENUS 27 BI	METHANE	97110898	A
GENUS 27 BI	LPG	971204601	B

PART.	CODE	DESCRIPTION	REF.	NOTE
1	570603	Pivot		
2	573316	Casing support bracket		
3	-----	Boiler frame		11
4	573106	Case panel support (L.H. + R.H.)		
5	573104	Left holder control panel bracket		
6	573222	Cover plate (underside)		
7	573435	Main heat exchanger		
8	573520	Gasket 3/4"		
9	572625	Main burner (Natural gas)	A	
9	572626	Main burner (L.P.G.)	B	
10	569413	Silent washer 37x26x2		
11	569446	Brass lock nut 3/4"		
12	572738	Pipe (gas valve to burner)		
13	569254	Gas valve gasket		
14	571158	VK gas valve without pilot burner outlet		
15	573727	Manual vent cock		
16	573057	Pipe (gas inlet)		
17	573523	Lock nut 3/4"		
18	570581	Pipe (motorised valve to cylinder)		
19	573455	Motorized valve body		
20	573090	Pipe (motorised valve outlet)		
21	569390	Gasket 1/4"		
22	570605	Pump pressure switch		
23	570576	Pipe (motorised valve inlet)		
24	573187	Pipe (secondary return)		
25	573531	Brass nipple 1/2"		
26	570571	Brass cap 1/2"		
27	573528	Gasket 1/2"		
28	573530	Lock nut 1/2"		
29	569415	Gasket 30x22x2		
30	573350	D.W. inlet pipe		
31	570542	D.H.W. probe spring		
32	573015	Temp probe (D.H.W.)		
33	573521	Gasket 3/8"		
34	570587	Pipe (expansion vessel C.H.)		
35	571649	Pressure gauge		
36	571982	Reset button		
37	571983	Summer/winter selector knob		
38	571627	Inspection cover L.H.		
39	571984	Control knob kit		
40	572384	Pressure gauge surround		
41	571623	Inspection cover R.H.		
42	571985	On/off knob		
43	571550	Power indicator L.E.D.		
44	572674	Control panel cover		
45	571551	Temperature L.E.D. bank		
46	952610	P.C.B. cable		
47	569711	Nylon bush 10mm		
48	952910	P.C.B. E A MI		
49	953082	P.C.B. EB C MI/MFFI		
50	573335	Main power supply cord		
51	-----	Terminal board		11
52	571562	Cable clamp		
53	569458	Cable holders silicone D.2		
54	573534	Cable holder D.75		
55	571558	Control panel rotor		
56	572993	Control panel (rear)		
57	571967	Cable cover (R.H.)		
58	573374	Low voltage wiring		
59	573196	Connection cable for divertor valve, circulator, gas valve		
60	573016	Flue control probe		
61	573349	Flue control probe fixing spring		
62	570717	Fastening spring		
63	573221	Flue hood		
64	573445	Back insulation panel		

PART.	CODE	DESCRIPTION	REF.	NOTE
65	573443	Side insulation panel		
66	573218	Combustion chamber		
67	573444	Front insulation panel		
68	573186	Flue control probe cable		
69	570553	Panel (combustion chamber front)		
70	-----	Sealed chamber		11
71	573105	Right holder control panel bracket		
72	570772	Cable holder		
73	570584	Pipe (main heat exchanger return)		
74	570585	Pipe (main heat exchanger flow)		
75	570248	Burner jet 1.25mm	A	
75	570251	Burner jet 0.72mm	B	
76	572138	Burner jet washer		
77	572716	Pipe (pump to main heat exchanger)		
78	564254	Automatic air release valve		
79	569387	Gasket 1"		
80	573342	Wired rectifier		
81	573449	Hydraulic group		
82	-----	Heat protection		11
83	572858	Cover (motorised valve)		
84	-----	Safety valve exhaust pipe		11
85	569292	Safety valve 3 bar		
86	570487	Oversize circulator with deaerator		
87	572719	Pipe (main flow switch negative)		
88	573224	Group circulator consent pressure gauge		
89	573093	Pump pressure switch cable		
90	573543	3/8" M-M tap		
91	572728	By-bass body		
92	572718	Pipe (main flow switch positive)		
93	571657	Cable (detection electrode/P.C.B.)		
94	569558	Special cable for ignition electrode		
95	572717	Pipe (main circuit)		
96	569561	Ignition electrode (L.H.)		
97	573441	Detection electrode		
98	569560	Ignition electrode (R.H.)		
99	569236	Temp probe (C.H.W.)		
100	571648	Overheat thermostat		
101	573493	Spark generator support bracket		
102	573023	Igniter		
103	570534	Cylinder polyurethane shell (rear)		
104	467290	D.H.W. cylinder 50 L		
105	570535	Cylinder polyurethane shell (front)		
106	571968	Cable cover (L.H.)		
107	573091	Three pole terminal board		
108	569720	Blind grommet		
109	573456	Expansion vessel (C.H.)		
301	573141	Panel (L.H. side)		
302	572733	Panel (front case)		
303	572404	Reverse plate		
304	571608	Regulation door		
305	572688	Plate		
306	571609	On/off door		
307	573142	Panel (R.H. side))		
311	571479	Gas valve coil		
331	570711	Motorised valve motor		
361	569281	Burner jet 1.25 full kit (Natural gas)		12
362	569282	Burner jet 0.72 full kit (LPG)		12
371	571547	Main flow switch membrane		
372	571772	Main flow switch magnet		
373	571771	Main flow switch spring		

PART.	CODE	DESCRIPTION	REF.	NOTE
374	571770	Main flow switch top cap		
375	573138	Main flow switch reed system		
410	469001	21x350mm M6 magnesium anode		
411	469216	Screw M8x23		
412	469068	98x37mm gasket with hole		
413	469495	M8 hexagonal nut		
414	469120	Flange plate		
415	570439	Boiler anode		
416	469582	Sheath with flange L=250mm		
417	990020	Gasket with 8x23 screw		

NOTE	DESCRIPTION
11	Not supplied as a spare part
12	Not illustrated

USEFUL TIPS

Instructions for the reader

This manual of "SPARE PARTS EXPLODED VIEW GAS WALL BOILERS" is designed to help you find the right spare part for repairs quickly and easily.

The drawings and list of spare parts refer only to the models shown in the table under the drawing.

Remember that the list of spare parts will help you find:

- the position in the drawing of all the parts available as spares under the ("PARTS" column);
- the code to use when requesting the spare part;
- a brief description of the spare part;
- the applicability of the spare part to specific models ("REF." column). If the box is blank, the spare part may be used for all the models to which the blow up refers;
- comments.

Requesting spare parts

When ordering spare parts remember to specify the code and number of parts required, as well as the name and address of the company requestin the spare part.

Orders should be sent by fax to MTS S.P.A., on the following numbers:

0732-626473 (FAX)

0732-628773 (FAX)

Contacting the MTS S.P.A. Servicing Centre

The MTS S.P.A. Servicing Centre has a special department that provides detailed information on how to resolve any of the technical problems that may be encountered with the GAS WALL BOILERS. Servicing Centres may use this service by calling the following numbers:

071-7100594

800-217718