



SPARE PARTS EXPLODED VIEW  
GAS WALL BOILERS

Models

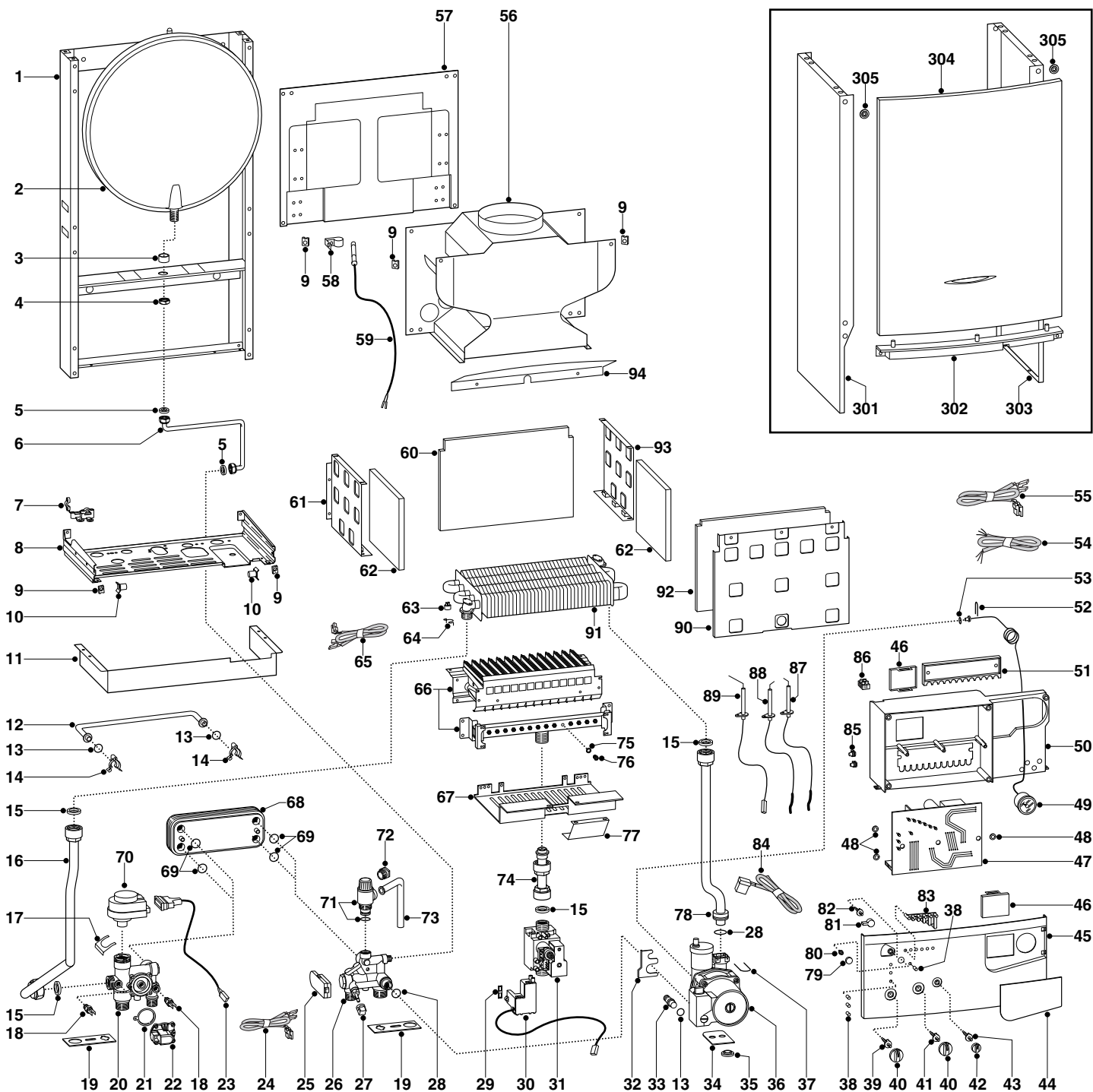
**MINI 23 MI MET (HU)**

**MINI 27 MI MET (HU)**

---

Edition 1 of 1 July 2004





ER2004210046301001

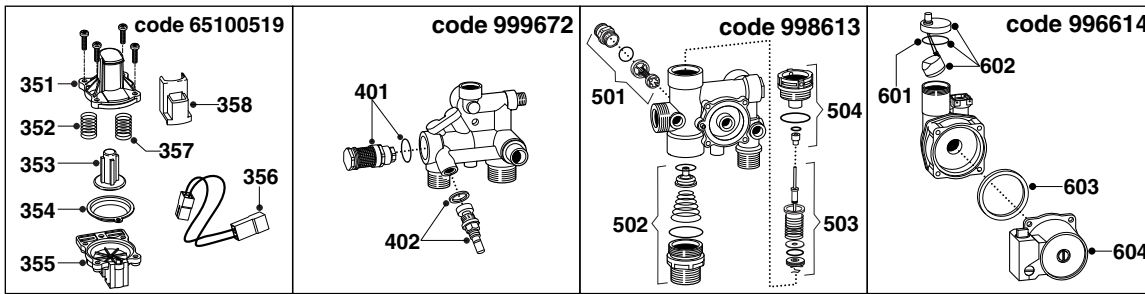
MODEL	CODE	SERIAL NO. VALIDITY	REF.
MINI 23 MI MET (HU)	3306000	2320418300000	A
MINI 27 MI MET (HU)	3306002	2320418300000	B

PART.	CODE	DESCRIPTION	REF.	NOTE
1	-----	Frame		11
2	998616	Expansion vessel		
3	998776	Bush (expansion vessel)		
4	998581	3/8" lock nut		
5	573521	Gasket 3/8" (25 pcs)		
6	999102	Pipe (expansion vessel)		
7	998580	Cable holder		
8	-----	Hydraulic group support		11
9	570717	Spring (fastening) (5 pcs)		
10	995492	Pivot		
11	65100712	Grankase (connectors cover white)		
12	998589	By-pass pipe		
13	998077	O-ring gasket (20 pcs)		
14	998064	Spring (by-pass pipe) (10 pcs)		
15	573520	Gasket 3/4" (25 pcs)		
16	999996	Pipe (C.H. flow)		
17	997077	Fixing clip (motor)		
18	998458	Temperature probe (D.H.W.)		
19	999601	Gasket (anti-vibration)		
20	998613	Flow group		
21	571547	Diaphragm (main flow switch)		
22	65100519	Main circuit flow switch kit with micro		
23	996336	Cable (power supply - motor)		
24	65101322	Cable (temperature probes)		
25	999075	D.H.W. flow switch		
26	999672	Return group (flow gauge)		13
27	571559	Filling cock knob		
28	998424	O-ring (C=4 D=17,04) (10 pcs)		
29	574279	Gasket (spark generator) (5 pcs)		
30	65100514	Spark generator (kit)		
31	997089	Gas valve (SIT 845 SIGMA)		
32	999162	Pump bracket		
33	999598	Pump plug		
34	995364	Spacer plate (pump) (20 pcs)		
35	999100	Lock washer (20 pcs)		
36	996614	Kit for rear pump attachment		
37	997153	U-clip (20 pcs)		
38	998576	Led (L=10.8)		
39	998578	Spindle (temperature knob)		
40	998663	Regulation knob		
41	998575	Spindle (temperature knob)		
42	998664	On-Off knob		
43	998574	Spindle (on/off knob)		
44	999146	Front cover		
45	999145	Control panel		
46	997745	Cover (potentiometers/P.C.B.)		
47	996163	P.C.B. (CMP2 MI/FFI)		
48	569711	Nylon bush (10mm - 20 pcs)		
49	999245	Pressure gauge		
50	-----	Control panel		11
51	998953	Cable holder cover		
52	571548	U-Clip (int. 10)		
53	998517	Gasket (20 pcs)		
54	995979	Cable (power supply)		
55	998863	Low voltage wiring		
56	996335	Flue hood	B	
56	996425	Flue hood	A	
57	-----	Combustion chamber back support		11
58	573349	Spring (Flue Control Probe) (10 pcs)		
59	995309	Cable (flue control probe)	B	
59	995348	Cable (flue control probe)	A	
60	996126	Panel (insulation - rear)	A	
60	996161	Panel (insulation - rear)	B	
61	995893	Panel (combustion chamber - L.H. side)	A	
61	995922	Panel (combustion chamber - L.H. side)	B	
62	998639	Panel (insulation - side)		

PART.	CODE	DESCRIPTION	REF.	NOTE
63	996065	Thermostat (overheat- 103°C)		
64	998583	Fixing spring (overheat therm.) (5 pcs)		
65	999927	Cable (overheat thermostat)		
66	996158	Burner 12 ramp (N.G.)	A	
66	998887	Burner 14 ramp (N.G.)	B	
67	995335	Protection screen	B	
67	999411	Protection screen	A	
68	571646	Secondary exchanger (p-type 23kW)	A	
68	573295	Secondary exchanger (p-type 27kW)	B	
69	573825	O-Ring (secondary exchanger - 10 pcs)		
70	997147	Motor (3-Way valve)		
71	573172	Safety valve (1/2" 3 bar)		
72	998567	Nut (pipe - safety valve)		
73	573176	Pipe (safety valve outlet)		
74	65100432	Pipe (gas inlet)		
75	572138	Burner jet washer (20 pcs)		
76	998433	Burner jet (NG 1.30) (10 pcs)		
77	999435	Protection screen		
78	998898	Pipe (C.H. return)		
79	998604	Button (reset)		
80	998573	Reset button (insert)		
81	999149	Selector button (comfort)		
82	65100842	Spindle (comfort)		
83	999143	Pilot light		
84	999968	Cable (P.C.B. - pump)		
85	569720	Blind grommet		
86	571787	Terminal board (two pole)		
87	65100251	Electrode (Ignition R.H.)		
88	65100250	Electrode (Ignition L.H.)		
89	998624	Electrode (Detection)		
90	65100555	Panel (combustion chamber - front)	A	
90	995921	Panel (combustion chamber - front)	B	
91	998620	Main exchanger	A	
91	999152	Main exchanger	B	
92	995952	Panel (insulation - front)	B	
92	995999	Panel (insulation - front)	A	
93	995923	Panel (combustion chamber - R.H. side)	B	
93	995892	Panel (combustion chamber - R.H. side)	A	
94	995312	Plate (frontal)	B	
201	999198	Flow regulator (8 L/min)		12
202	999199	Flow regulator (10 L/min)		12
203	999200	Flow regulator (12 L/min)		12
301	998695	Case panel (L.H. side)		
302	991944	Front panel crossbar		
303	998694	Case panel (R.H. side)		
304	995341	Case panel (front)	B	
304	998834	Case panel (front)	A	
305	995305	Washer (20 pcs)		
701	998716	N.G. burner jet full kit (15 pcs)		12
702	998717	L.P.G. burner jet full kit (15 pcs)		12

NOTE	DESCRIPTION
11	Not supplied as a spare part
12	Not illustrated
13	Order part. 201 or 202 or 203 also

ER2004210046301001



PART.	CODE	DESCRIPTION	REF.	NOTE
351	571775	D.H.W. pressure switch top cover		
352	571771	Spring (main flow switch) (10 pcs)		
353	571772	Magnet (main flow switch)		
354	572170	Diaphragm (pressure switch)		
355	571777	D.H.W. pressure switch bottom cover		
356	998468	Pressure switch extension cable		
357	571776	Spring (inox)		14
358	998172	Microswitch (main flow switch)		
401	998941	D.H.W. actuator kit		
402	571445	Filling tap kit		
501	998490	Central heating by-pass kit		
502	998718	3-Way spring kit (C.H.)		
503	998975	3-Way spring kit (D.H.W.)		
504	998974	Heating actuator bush		
601	998644	O-ring (pump) (10 pcs)		
602	998643	Auto Air Vent		
603	998738	Gasket (pump head)		
604	996615	Kit (motor pump)		

NOTE	DESCRIPTION
14	For sanitary function only