

# SPARE PARTS EXPLODED VIEW STORAGE ELECTRIC WATER HEATERS

Model

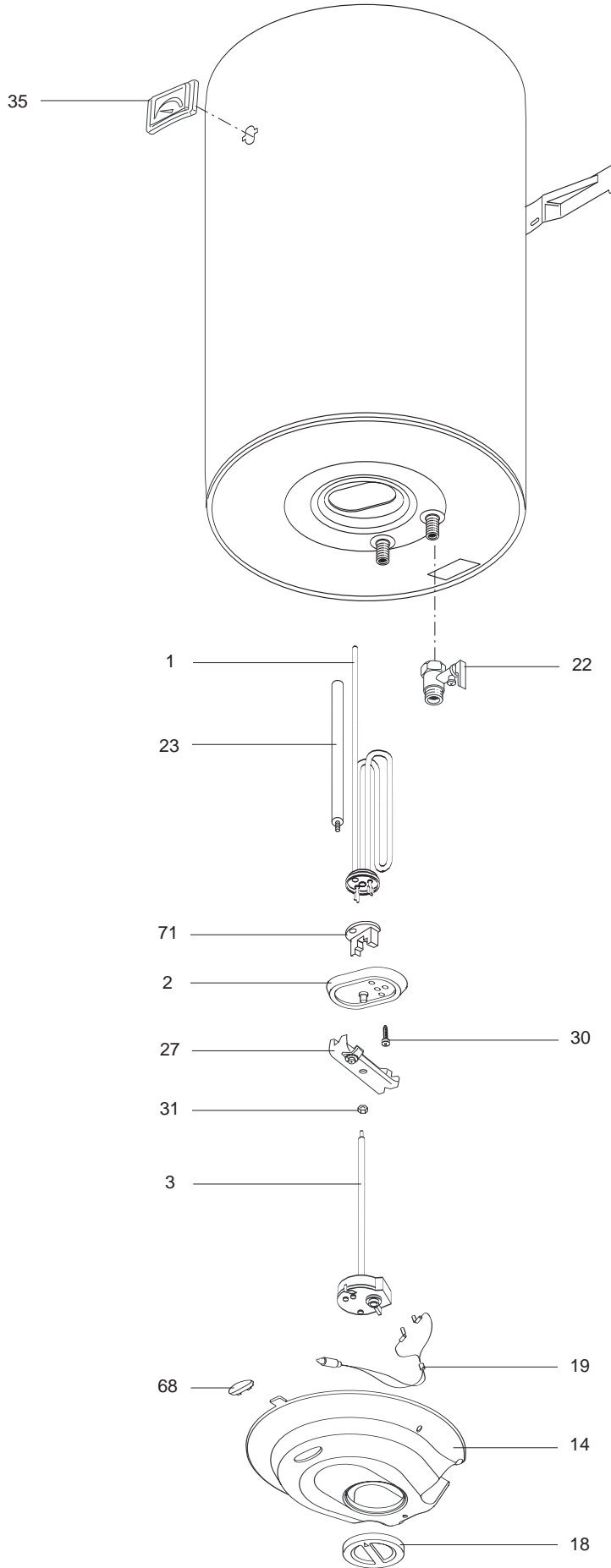
**NTS**

R8215457-01EN - Edition 01 - 06/06/2006

NTS

Storage Electric Water Heaters

869 657		NTS 50	...	...
370 0055		NTS 50	...	...
875 150		NTS 50 R	...	...
869 658		NTS 80	...	...
370 0056		NTS 80	...	...
875 151		NTS 80 R	...	...
869 864		NTS 80 TD	...	...
875 173		NTS 80 TS	...	...
869 659		NTS 100	...	...
370 0057		NTS 100	...	...
875 152		NTS 100 R	...	...
869 865		NTS 100 TD	...	...
875 174		NTS 100 TS	...	...
Reference	Ind.	Model type	Begin	End



Key N	Description	Manf. Pt. N	Other	Type	50			80			100			Manf. date	
					R	R	TD	TS	R	TD	TS	from	to		
0001	ELEMENT 1200W 230V	816615			•	•	•	•	•	•	•	•			
	ELEMENT 1500W 230V	816616						•		•	•	•			
0002	FLANGE WITH GASKET	993012			•	•	•	•	•	•	•	•			
0003	THERMOSTAT	691214			•	•	•	•	•	•	•	•			
	THERMOSTAT	691217				•	•				•	•			
0014	PLASTIC COVER	570330			•	•	•	•	•	•	•	•			11/04
	PLASTIC COVER	65102554				•	•				•	•	12/04		
	PLASTIC COVER	65102556			•	•	•	•	•	•	•	•	12/04		
	PLASTIC COVER	571765				•	•				•	•			11/04
0018	CONTROL KNOB	65102555				•	•				•	•	12/04		
	CONTROL KNOB	993171				•	•				•	•			11/04
0019	SIGNAL LAMP	993025			•	•	•	•	•	•	•	•			
0022	SAFETY VALVE	571730			•	•	•	•	•	•	•	•			
0023	MAGNESIUM ANODE D:25,5 L:230 M5	993014			•	•	•	•	•	•	•	•			
0027	FLANGE BRACKET	65104106			•	•	•	•	•	•	•	•	05/06		
	FLANGE BRACKET	993011			•	•	•	•	•	•	•	•			04/06
0030	SCREW M6X12	993000			•	•	•	•	•	•	•	•			
0031	HEXAGONAL NUT	570127			•	•	•	•	•	•	•	•			
0035	THERMOMETER	573427			•	•	•	•	•	•	•	•			
0068	SIGNAL LAMP CAP	571767			•	•	•	•	•	•	•	•	12/04		
	SIGNAL LAMP CAP	570331			•	•	•	•	•	•	•	•			11/04
0071	TERMINAL SHIELD (BLUE)	993009			•	•	•	•	•	•	•	•			
	TERMINAL SHIELD (RED)	993010					•			•	•	•			

## LIST OF THE ABBREVIATIONS

HW .....	: Hot water.
CW .....	: Cold water.
C .....	: Ceramic resistance (normal heating).
Ca .....	: Ceramic resistance (accelerated heating)
TP .....	: Immersion heater.
1F .....	: With fittings.
2F .....	: Without fittings.
3F .....	: With fittings and another outlet connection.
AMI .....	: With mixing valve.
SMI .....	: Without mixing valve.
PUISS .....	: Power of th appliance.
PN .....	: Appliance with normal pression.
LP .....	: Appliance with low pression.
PV .....	: Appliance with variable power.
PF .....	: Appliance with fixed power..

## IDENTIFICATION PLATE

### SERIAL NUMBER

Ex: 03 09 08

Manufacturing day  
 Month of manufacture : from 1 to 12 → January to December  
 Year of manufacture

OR

Ex: 02 11 00001 007843

Product reference  
 Sequential number  
 Month of manufacture : from 1 to 12 → January to December  
 Year of manufacture

The indications mentioned on the prices, commercial or technical literature and the scheme are written for your guidance and are available at a given time. The CONSTRUCTOR retains the power to modify the presentation, the form, the size, the conception or the material of the products.