



SPARE PARTS EXPLODED VIEW  
GAS WALL BOILERS

Models

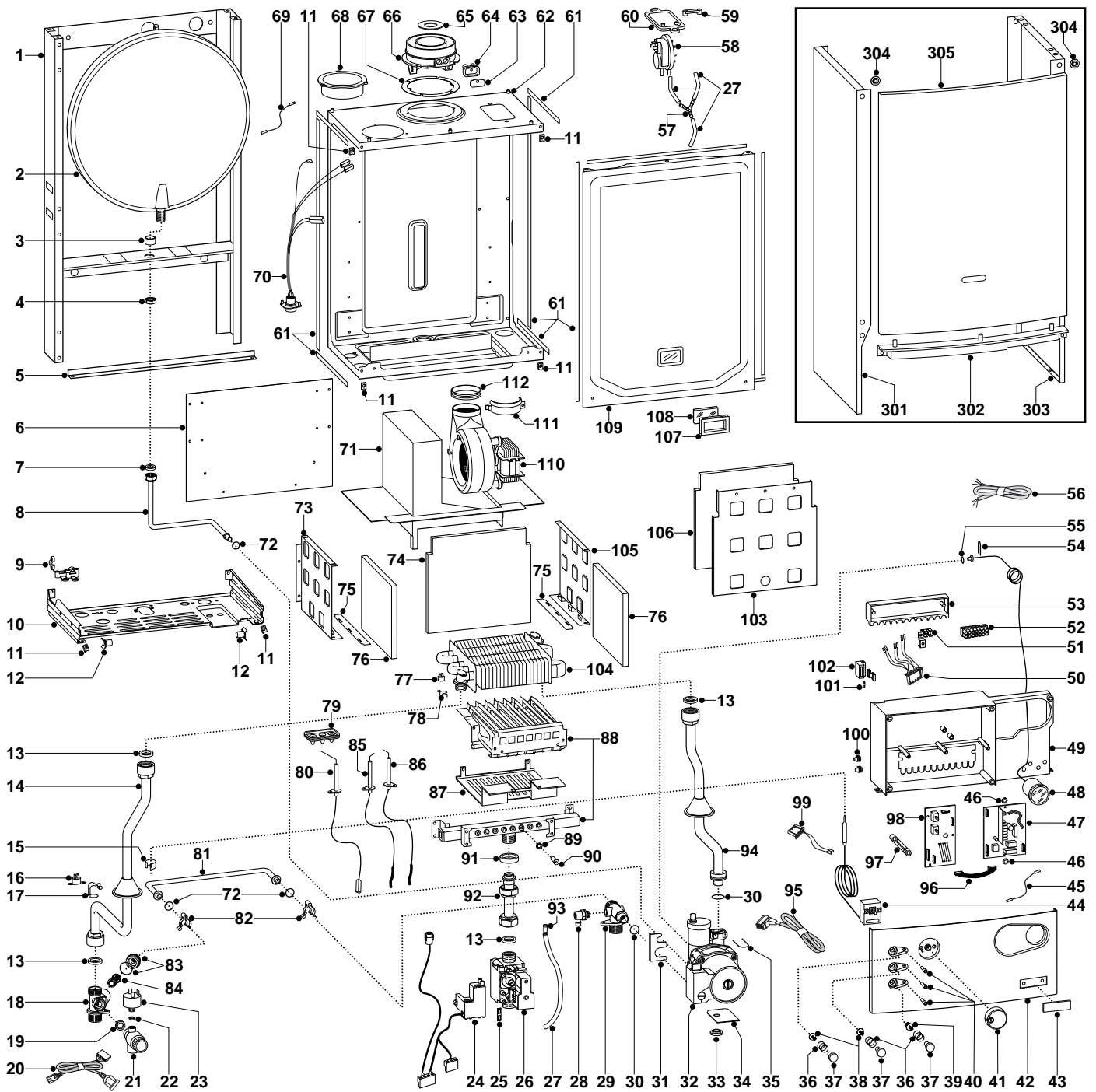
**MICROSYSTEM 10 RFFI**

**MICROSYSTEM 15 RFFI**

---

Edition 2 of 23 January 2004





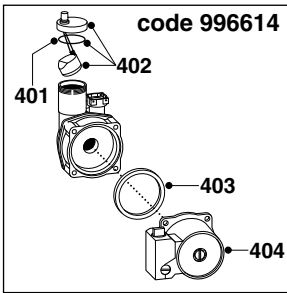
ER2004210025102001

MODEL	CODE	SERIAL NO. VALIDITY	REF.
MICROSYSTEM 10 RFFI METHANE	535517	2320402300001	A
MICROSYSTEM 15 RFFI METHANE	535521	2320402300001	B

PART.	CODE	DESCRIPTION	REF.	NOTE
1	-----	Frame		11
2	998616	Expansion vessel		
3	998776	Bush (expansion vessel)		
4	998581	3/8" lock nut		
5	65100295	Frame support		
6	65100172	Panel ( combustion chamber - rear)		
7	573521	Gasket 3/8" (25 pcs)		
8	999525	Pipe (expansion vessel)		
9	998580	Cable holder		
10	-----	Hydraulic group support		11
11	570717	Spring (fastening) (5 pcs)		
12	995492	Pivot		
13	573520	Gasket 3/4" (25 pcs)		
14	999528	Pipe (C.H. flow)		
15	571565	Fixing spring (pressure gauge) (10 pcs)		
16	570760	Thermostat (anti-frost)		
17	999557	Fixing spring (thermostat) (5 pcs)		
18	996049	Flow group (twin pass)		
19	573528	Gasket 1/2" (25 pcs)		
20	995407	Cable (low water pressure switch)		
21	998447	Safety valve (1/4" 3 Bar)		
22	569390	Gasket 1/4" (25 pcs)		
23	995903	Low water pressure switch		
24	65100514	Spark generator		
25	574279	Gasket (spark generator) (5 pcs)		
26	999474	Gas valve		
27	573576	Compensation tube		
28	998809	Drain valve		
29	990708	Return group		
30	998424	O-ring (C=4 D=17,04) (10 pcs)		
31	999162	Pump bracket		
32	996614	Kit for rear pump attachment		
33	999100	Lock washer (20 pcs)		
34	995364	Spacer plate (pump) (20 pcs)		
35	997153	U-clip (20 pcs)		
36	999603	Spring (push button)		
37	999469	Push button		
38	999442	Spindle (push button)		
39	999444	Reset button insert		
40	997714	L.E.D. (power indicator)		
41	999456	Control knob		
42	999459	Control panel (front)		
43	-----	Name badge		
44	999578	Thermostat (regulation)		
45	999547	Earth cable (P.C.B.)		
46	569711	Nylon bush (10mm - 20 pcs)		
47	65101255	Printed circuit board (CB3-FFI02)		
48	999245	Pressure gauge		
49	-----	Control panel		11
50	995323	Cable (P.C.B.-terminal board)		
51	-----	Terminal board		11
52	995473	Terminal board		
53	995474	Control panel cover		11
54	571548	U-Clip		
55	998517	Gasket (20 pcs)		
56	995325	Cable (power supply)		
57	573327	"Y" piece (air pressure)		
58	995291	Air pressure switch		
59	573329	Pressure intake cover		
60	997203	Support plate (air pressure switch)		
61	65100879	Seal (combustion chamber - 10x6)		
62	-----	Seal chamber		11
63	998565	Cover (flue test point)		
64	998636	Gasket (flue test point - 5 pcs)		
65	65101021	Restrictor (flue-exhaust manifold-D=41)	B	
65	65101022	Restrictor (flue-exhaust manifold-D=44)	A	

PART.	CODE	DESCRIPTION	REF.	NOTE
66	999561	Flue (exhaust manifold / header)		
67	998637	Gasket (flue collar - 5 pcs)		
68	998595	Plug (air intake)		
69	999925	Earth cable (fan)		
70	995894	Cable (sealed chamber)		
71	999466	Flue hood	B	
71	999983	Flue hood	A	
72	998077	O-ring gasket (20 pcs)		
73	995893	Panel (combustion chamber - L.H. side)		
74	999441	Panel (insulation - rear)		
75	999981	Metal sheet (lower side)	A	
76	998639	Panel (insulation - side)		
77	999538	Overheat thermostat (100° - 80°C)		
78	998583	Fixing spring (overheat therm.) (5 pcs)		
79	998147	Ignition electrode cable rubber		
80	998624	Electrode (Detection)		
81	998589	By-pass pipe		
82	998064	Spring (by-pass pipe) (10 pcs)		
83	996045	Union by-pass + O-ring		
84	996046	By-pass		
85	65100250	Electrode (Ignition L.H.)		
86	65100251	Electrode (Ignition R.H.)		
87	999982	Air baffle plate	A	
88	999479	Burner 8 ramp (N.G.)	B	
88	999481	Burner 6 ramp (N.G.)	A	
89	572138	Burner jet washer (20 pcs)		
90	998433	Burner jet (N.G. 1.30) (10 pcs)		
91	569443	Silicone seal		
92	65100432	Pipe (gas inlet)		
93	573325	Rivet (20 pcs)		
94	999529	Pipe (C.H. return)		
95	995906	Cable (pump)		
96	995324	Cable (P.C.B.)		
97	999458	Lever (P.C.B.)		
98	999501	Printed circuit board (CT1)		
99	996108	Cable (earth)		
100	569720	Blind grommet		
101	950030	Fast fuse 2A (20 pcs)		
102	572860	Terminal board (one-pole) + fuse-holder		
103	995986	Panel (combustion chamber - front)		
104	999486	Main exchanger	B	
104	999965	Main exchanger	A	
105	995892	Panel (combustion chamber - R.H. side)		
106	995997	Panel (insulation - front)		
107	998076	Gasket (sight glass)		
108	998075	Sight glass		
109	999151	Panel (front - sealed chamber)		
110	995322	Fan	B	
110	999487	Fan	A	
111	998566	Fixing clamp (fan)		
112	65100707	Gasket (fan) (5 pcs)		
301	998477	Case panel (L.H. side)		
302	991944	Front panel crossbar		
303	998476	Case panel (R.H. side)		
304	995305	Washer (20 pcs)		
305	998442	Case panel (front)		
311	998716	Natural gas burner jet full kit (15 pcs)		12
312	998717	L.P.G. burner jet full kit (15 pcs)		12

NOTE	DESCRIPTION
11	Not supplied as a spare part
12	Not illustrated



<b>PART.</b>	<b>CODE</b>	<b>DESCRIPTION</b>	<b>REF.</b>	<b>NOTE</b>
401	998644	O-ring (pump) (10 pcs)		
402	998643	Auto Air Vent		
403	998738	Gasket (pump head)		
404	996615	Kit (motor pump)		