



SPARE PARTS EXPLODED VIEW
GAS WALL BOILER

Models

MINICODEX 23 MFFI (CMP2)

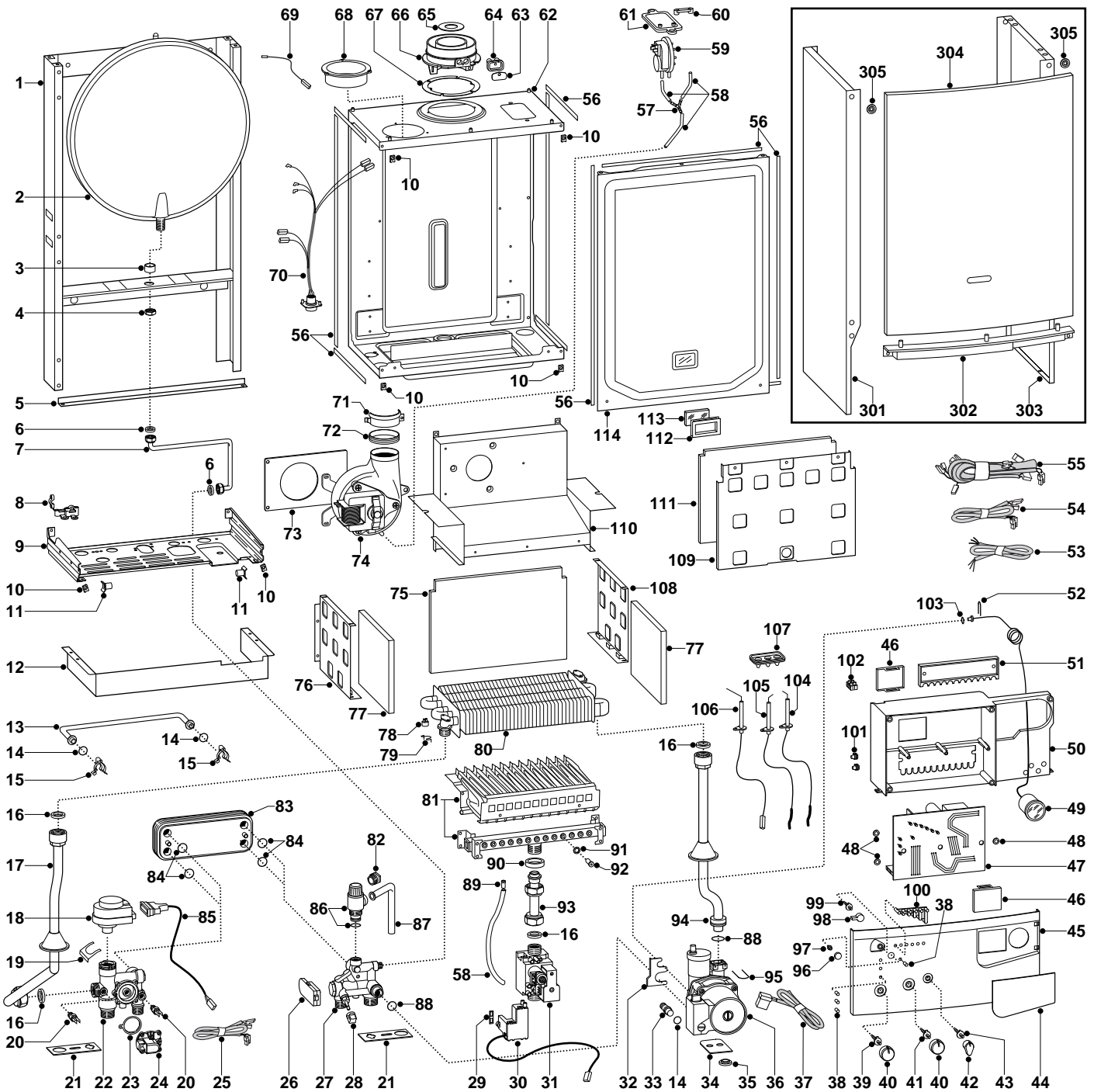
MINICODEX 27 MFFI (CMP2)

Edition 2 of 6 September 2002



Add to Edition 1

ER2002210029302.001



ER2.0022.1002.9302001

MODEL	CHARACTERISTICS	SERIAL NO: VALIDITY	REF.
MINICODEX 23 MFFI (CMP2)	NATURAL GAS	2320219000001	A
MINICODEX 27 MFFI (CMP2)	NATURAL GAS	2320219000001	B

PART.	CODE	DESCRIPTION	REF.	NOTE
1	-----	Frame		11
2	998616	Expansion vessel		
3	998776	Bush		
4	998581	3/8" lock nut		
5	995393	Frame support		
6	573521	Gasket 3/8" (25 pcs)		
7	999102	Pipe (expansion vessel)		
8	998580	Cable holder		
9	-----	Hydraulic group support		11
10	570717	Spring (fastening) (5 pcs)		
11	995492	Pivot		
12	995333	Grankase (connectors cover white)		
13	998589	By-pass pipe		
14	998077	O-ring gasket (20 pcs)		
15	998064	Spring (by-pass pipe) (10 pcs)		
16	573520	Gasket 3/4" (25 pcs)		
17	999978	Pipe (C.H. flow)		
18	997147	Motor (3-Way valve)		
19	997077	Fixing clip (motor)		
20	998458	Temperature probe		
21	999601	Gasket (anti-vibration)		
22	998613	Flow group		
23	571547	Diaphragm (main flow switch)		
24	998099	Main circuit flow switch		
25	998632	Cable (temperature probes)		
26	999075	D.H.W. flow switch		
27	999672	Return group (flow gauge)		
28	571559	Filling cock knob		
29	574279	Gasket (5 pcs)		
30	999919	Spark generator		
31	997089	Gas valve (SIT 845 SIGMA)		
32	999162	Pump bracket		
33	999598	Pump plug		
34	995364	Spacer plate (pump)		
35	999100	Lock washer (20 pcs)		
36	999623	Pump	B	
36	999688	Pump	A	
37	999968	Cable (P.C.B. - pump)		
38	998576	Led (L=10.8)		
39	998578	Spindle (temperature knob)		
40	998933	Control knob		
41	998575	Spindle (temperature knob)		
42	998932	On-off knob		
43	998574	Spindle (on/off knob)		
44	999146	Front cover door		
45	995484	Control panel		
46	997745	Timer opening cover		
47	996163	P.C.B. (CMP2 MI/FFI)		
48	569711	Nylon bush (10mm) (20 pcs)		
49	999245	Pressure gauge		
50	-----	Control panel		11
51	998953	Cable holder cover		
52	571548	Clip (main flow switch)		
53	999521	Cable (power supply)		
54	998863	Low voltage wiring		
55	995317	High voltage wiring		
56	998516	Gasket (adhesive 10x6) (5 pcs)		
57	573327	"Y" piece (air pressure)		
58	573576	Compensation tube		
59	571651	Air pressure switch	B	
59	998484	Air pressure switch	A	
60	573329	Pressure intake cover		
61	997203	Support plate (air pressure switch)		
62	-----	Sealed chamber		11
63	998565	Cover (flue test point)		

ER20022 10029302 001

PART.	CODE	DESCRIPTION	REF.	NOTE
64	998636	Gasket (flue test point) (5 pcs)		
65	995315	Restrictor (flue - exhaust manifold/header d.41)		
65	999980	Restrictor (flue - exhaust manifold/header d.43)		
66	999561	Flue (exhaust manifold/header)		
67	998637	Gasket (flue collar) (5 pcs)		
68	998595	Plug (air intake)		
69	999925	Earth cable (sealed chamber)		
70	995316	Cable (fan/air pressure switch)		
71	998566	Fixing clamp (fan)		
72	995349	Gasket (fan) (5 pcs)		
73	999135	Panel (insulation - fan)		
74	998894	Fan	B	
74	999397	Fan	A	
75	998640	Panel (insulation - rear)	A	
75	999554	Panel (insulation - rear)	B	
76	995893	Panel (combustion chamber - L.H. side)	A	
76	995922	Panel (combustion chamber - L.H. side)	B	
77	998639	Panel (insulation - side)		
78	996065	Thermostat (overheat- 103°C)		
79	998583	Fixing spring (thermostat) (5 pcs)		
80	998620	Main exchanger	A	
80	998893	Main exchanger	B	
81	996158	Burner 12 ramp (N.G.)	A	
81	998887	Burner 14 ramp (N.G.)	B	
82	998567	Nut (pipe - safety valve)		
83	571646	Secondary exchanger (p-type 23kW)	A	
83	573295	Secondary exchanger (p-type 27kW)	B	
84	573825	O-Ring (secondary exchanger) (10 pcs)		
85	996336	Diverter valve (DHW)		
86	573172	Safety valve (1/2" 3 bar)		
87	573176	Pipe (safety valve outlet)		
88	998424	O-ring (C=4 D=17,04) (10 pcs)		
89	573325	Rivet (20 pcs)		
90	569443	Silicone seal		
91	572138	Burner jet washer (20 pcs)		
92	998433	Burner jet (N.G. 1.30) (10 pcs)		
92	998434	Burner jet (L.P.G. 0.77) (10 pcs)		
93	998729	Pipe (gas valve)		
94	998732	Pipe (C.H. return)		
95	997153	U-clip (20 pcs)		
96	998604	Reset button		
97	998573	Reset knob insert		
98	999149	Selector button (comfort)		
99	999144	Spindle (comfort)		
100	999143	Pilot light		
101	569720	Blind grommet		
102	571787	Terminal board (two pole)		
103	998517	Gasket (20 pcs)		
104	998623	Electrode (Ignition R.H.)		
105	998622	Electrode (Ignition L.H.)		
106	998624	Detection electrode		
107	998147	Ignition electrode cable rubber		
108	995892	Panel (combustion chamber - R.H. side)	A	
108	995923	Panel (combustion chamber - R.H. side)	B	
109	996134	Panel (combustion chamber - front)	A	
109	995921	Panel (combustion chamber - front)	B	
110	998925	Flue hood	B	
110	999385	Flue hood	A	
111	995996	Panel (insulation - front)	B	
111	995995	Panel (insulation - front)	A	
112	998076	Gasket (sight glass)		
113	998075	Sight glass		
114	999151	Panel (combustion chamber - front)		

PART.	CODE	DESCRIPTION	REF.	NOTE
301	998477	Case panel (L.H. side)		
302	998596	Insert case		
303	998476	Case panel (R.H. side)		
304	998442	Case panel (front)		
305	995305	Washer (20 pcs)		
311	998716	Burner jet (full kit - N.G.) (15 pcs)		12
312	998717	Burner jet (full kit - L.P.G.) (15 pcs)		12

NOTE	DESCRIPTION
11	Not supplied as a spare part
12	Not illustrated